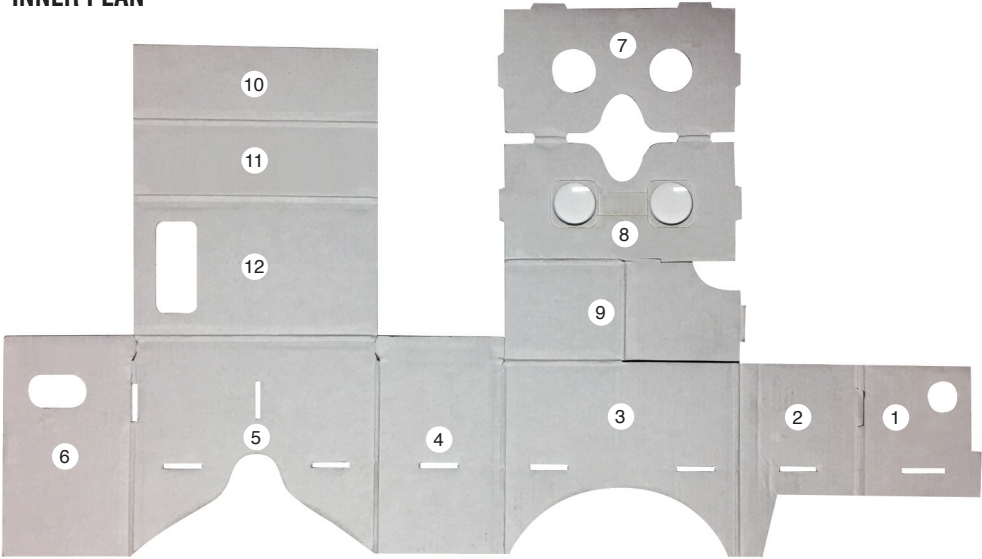
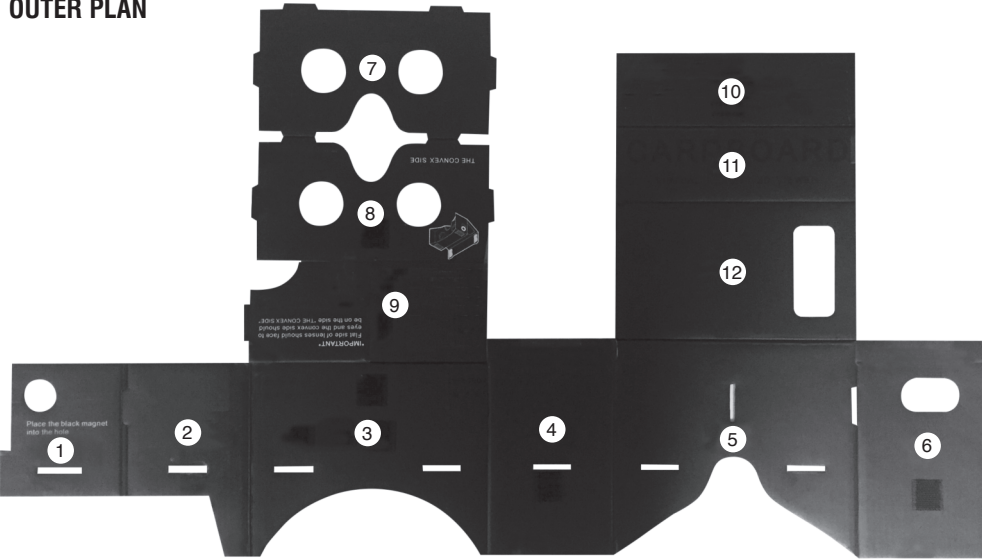


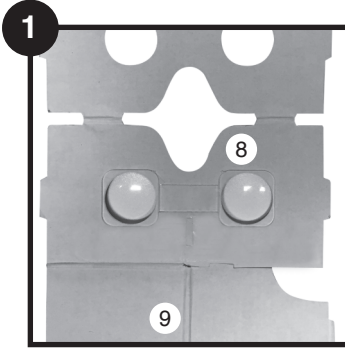
CARDBOARD VR GLASSES - ASSEMBLY INSTRUCTIONS

INNER PLAN

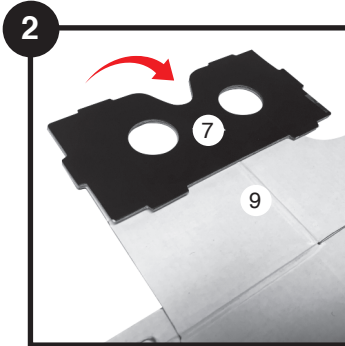


OUTER PLAN

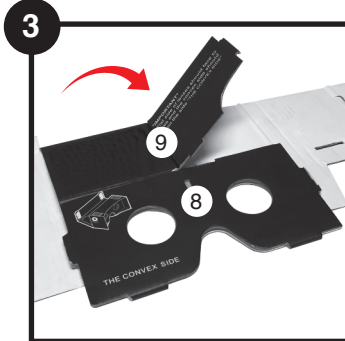




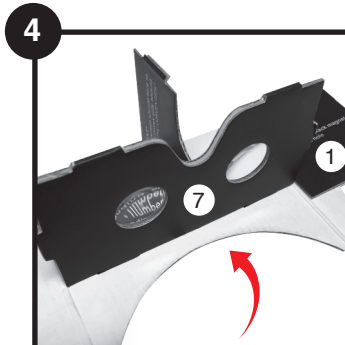
- Ensure lenses are inserted first
 - flat side facing inner
 - convex side facing outer



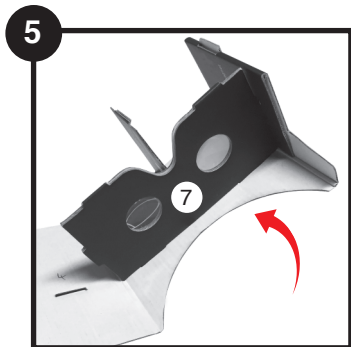
- Fold (7) over (8)



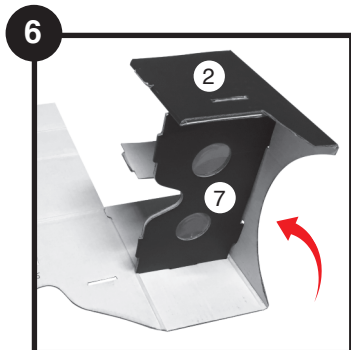
- Fold (8) and (9) over (3)



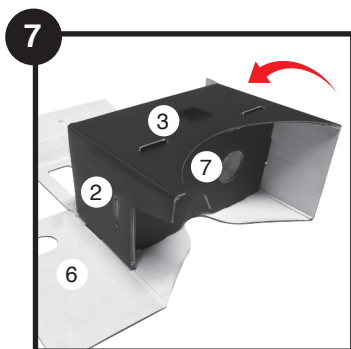
- Slot (9) into (7) / (8)
- Fold (1) over (2)
- Insert magnet A into hole on (1)



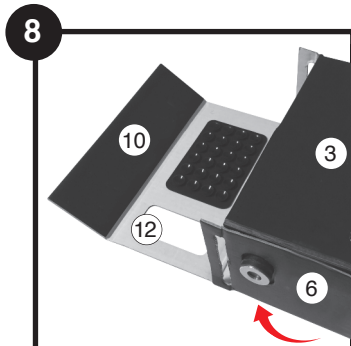
- Slot (1) / (2) into (7) / (8)
- Lift section toward face # (4)



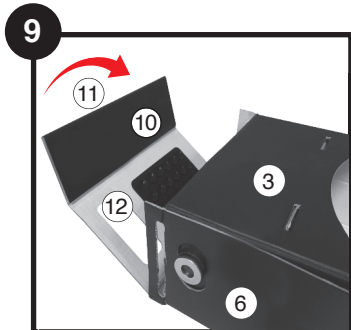
- Slot (7) / (8) into (4)



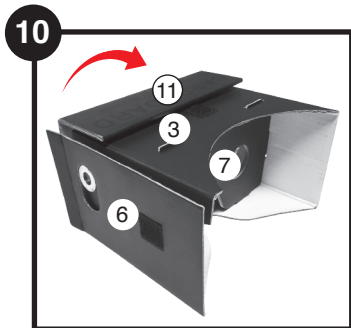
- Slot (1) / (2) into hole between (5) and (6)



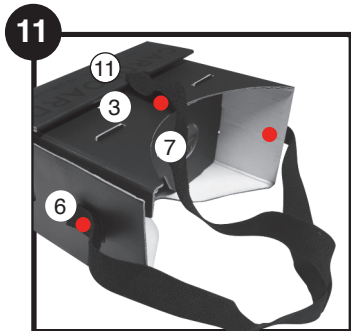
- Fold up (6) and stick to (1) / (2) using double sided tape
- Fold (10) over (11)
- Stick supplied phone suction pad to 12



- Place phone onto suction pad on (12)
- Lift (10) / (11) and (12) over onto (3)
- Insert magnet B into hole in (6)
- should be opposite magnet on (1)



- Fix (10) / (11) onto (3)
with velcro strips provided



- Fix provided headstraps onto (6), (4)
and (3) using velcro strips provided

ALL OVER PRINT EXAMPLE

